



Men's Health Catalogue



MEN'S HEALTH

Mermaid Medical offers a wide range of products suited for a variety of procedures for Men's Health.

Barrigel®

Being a front-runner within rectal spacing, Barrigel® is the only rectal spacer that can be sculpted in place to create a custom fit to your anatomy, better protecting the healthy tissue from radiation beam exposure.

AccuCARE™

The AccuCARE™ equipment line features an array of transperineal solutions aimed at prostate cancer detection, targeting and treatment, including steppers, stabilizers, and storage stands. The AccuCARE™ accessory kits complement the equipment with cost-effective solutions needed to perform ultrasound-guided transperineal procedures.

Besides being crucial for rectal spacing procedures, the AccuCARE™ line can be used for brachytherapy, cryotherapy, fiducial marker placement, saturation biopsies and targeted biopsies.

Furthermore, our portfolio also consists of endocavity needle guides ideal for transrectal biopsies, fluid aspirations, catheterization, and marker placement ensuring confident outcomes. These products are to be found in our Ultrasound Needle Guidance and Probe Covers catalogue.

Mermaid Medical provides physicians and hospitals with safe and functional equipment and accessories indicated for several transperineal and transrectal procedures, making it a one-stop-shop experience.



Mermaid Medical Group is a Nordic, privately owned company established in 2007 and headquartered in Copenhagen, Denmark. We develop, manufacture, and distribute medical devices to hospitals and end users across Europe, the U.S., and Asia. We primarily work within solutions to diseases in the vascular system as well as other devices used in interventional radiology. We strive to be the preferred partner for manufacturers as well as hospitals and healthcare professionals.

TABLE OF CONTENT

+ Rectal Spacing	
• Barrigel® Rectal Spacing	4
+ Steppers	
• EX3™ Stepper	6
• Classic Stepper	7
+ Micro-Touch™ Stabilizers	
• Micro-Touch™	8
• Micro-Touch™ LP	8
• Micro-Touch™ Transportation Stand	8
+ AccuCARE™ Accessories	
• Accessory Kits	9
• Template Grid	9
• Endocavity Balloon	9
• Endocavity Drape	9
+ Multi-Purpose Workstations™	
• Multi-Purpose Workstation™ Stepper	10
• Multi-Purpose Workstation™ Stabilizers	11
+ Automatic Biopsy Needles	
• M-Biopsy® Automatic Disposable Biopsy Needle	12
+ Endocavity Needle Guides	
• Endocavity Needle Guides	14
• Endocavity Needle Guides Quick-Release	15
+ Endocavity Ultrasound Probe Covers	
• CIV-Flex™ Latex-Free Endocavity Covers	16
• NeoGuard® Latex-Free Endocavity Covers	17

Rectal Spacing



Barrigel® Rectal Spacing

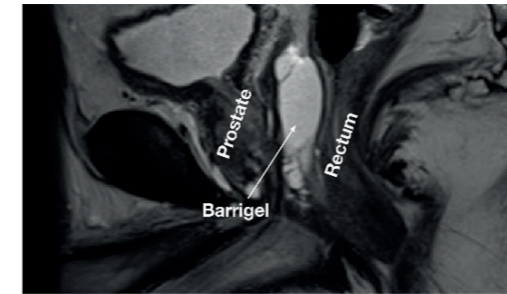
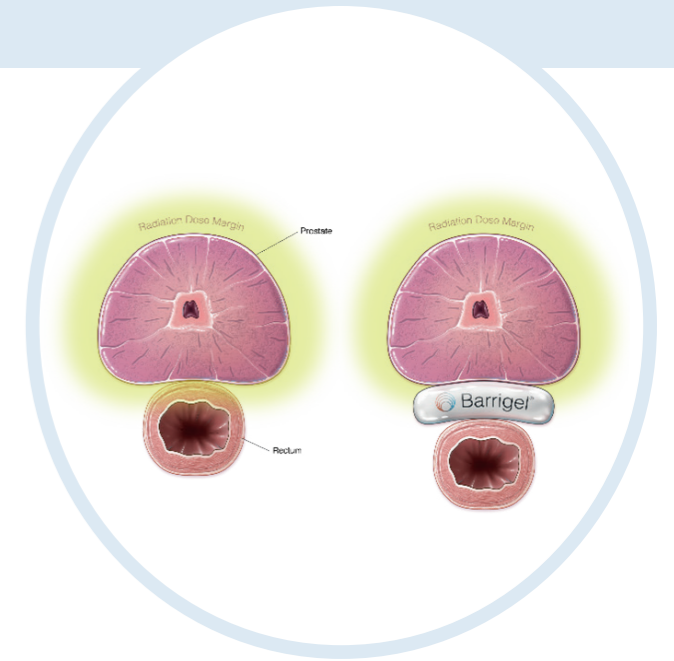
Barrigel® is intended to temporarily position the rectal wall away from the prostate during radiotherapy for prostate cancer to reduce the radiation dose delivered to the anterior rectum. It gives the ability to sculpt, layer and customize with real-time visualization for optimal positioning and more complete protection.

Barrigel® is composed of Non-Animal Stabilized Hyaluronic Acid (NASHA®), a biodegradable material, and it maintains space for the entire course of prostate radiotherapy treatment.

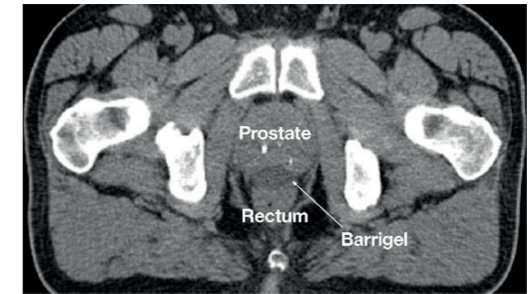
Product Feature	Barrigel®	PEG Hydrogel
Viscous & Sculptable Gel	+	Polyethylene Glycol Liquid
No Injection Time Constraints	+	SpaceOAR – 8 -10 seconds ¹ SpaceOAR Vue – 10 -15 seconds ^{2 3}
Anatomy-Specific Custom Spacing	+	No
High TRUS Visibility	+	Frequent artifact after deployment ¹
Image-Guided Procedure	+	No
Real-Time Placement Visualisation	+	No
Single-Step Assembly	+	14 steps ⁴

Features:

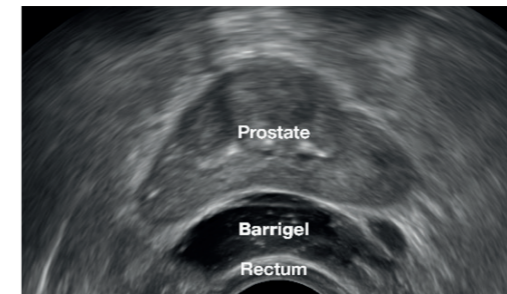
- Great control over placement
- No time constraints during deployment
- Ability to sculpt, layer and customize
- Enhanced visibility during procedure



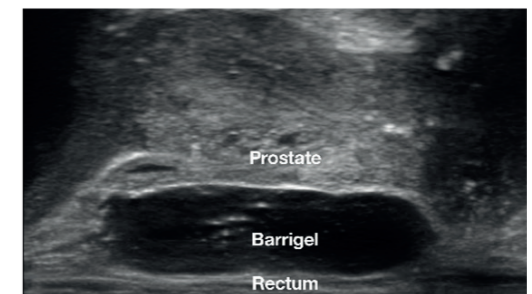
MR image courtesy of Alex Engelman, MD
Florida Urology Partners
Radiation Oncologist; Florida, United States



CT image courtesy of Gregory Bell, MD
Austin Cancer Center
Interventional Radiologist; Texas, United States



TRUS image courtesy of Neil F. Mariados, MD
Associated Medical Professionals
Radiation Oncologist; New York, United States



TRUS image courtesy of Neil F. Mariados, MD
Associated Medical Professionals
Radiation Oncologist; New York, United States

¹ Montoya J, Gross E, Karsh L. How I do it: Hydrogel spacer placement in men scheduled to undergo prostate radiotherapy. Can J Urol. 2018;25(2):9288-9293.

² Boston Scientific. SpaceOAR™ Hydrogel: Advancing radiation therapy – SpaceOAR™ Vue across different radiation modalities. <https://educare.bostonscientific.com/s/educareus-contentdetail?MDY4MkswMDAwMFM2VkdwUUU0&mainView=Radiation%20Oncology&mainViewSlug=radiation-oncology>. 2021. Accessed April 1, 2022.

³ Dempsey PJ, Power JW, Yates A et al. Creation of a protective space between the rectum and prostate prior to prostate radiotherapy using a hydrogel spacer. Clin Radiol. 2022;77:e195-e200.

⁴ SpaceOAR® System Product Code SO-31-1 Instructions for Use. Bedford, MA: Augmenix; Rev C.

Steppers



EX3™ Stepper

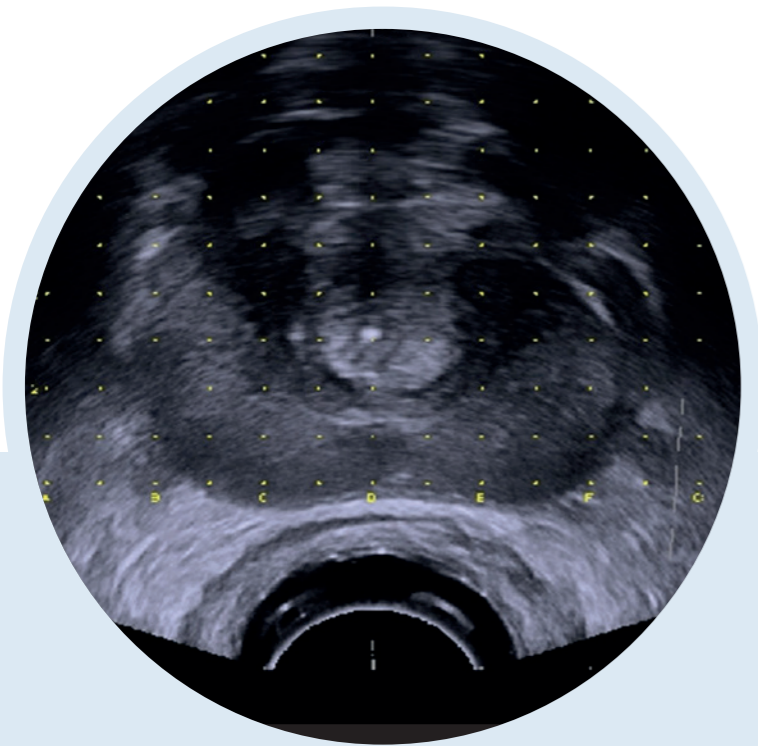
Advancing the Standard in Real-Time Planning

For ultrasound-guided brachytherapy and other transperineal procedures, choose CIVCO's EX3™ Stepper for direct connection and clear reporting of angular and linear position directly to the treatment planning software.

The EX3™ is compatible with leading treatment planning software including Varian Medical System's VariSeed™ and Vitesse™ Acoustic Medsystem's Radvision and MIMSoftware's Symphony™ and bk3000/bk5000 ultrasound systems.

Features:

- Removable electronic unit to mitigate cross-contamination risk and reduce cleaning time.
- Reports ultrasound probe positioning to treatment planning software offering timely data analysis.
- Offers smooth rotation and free movement for prostate cancer detection and treatment.



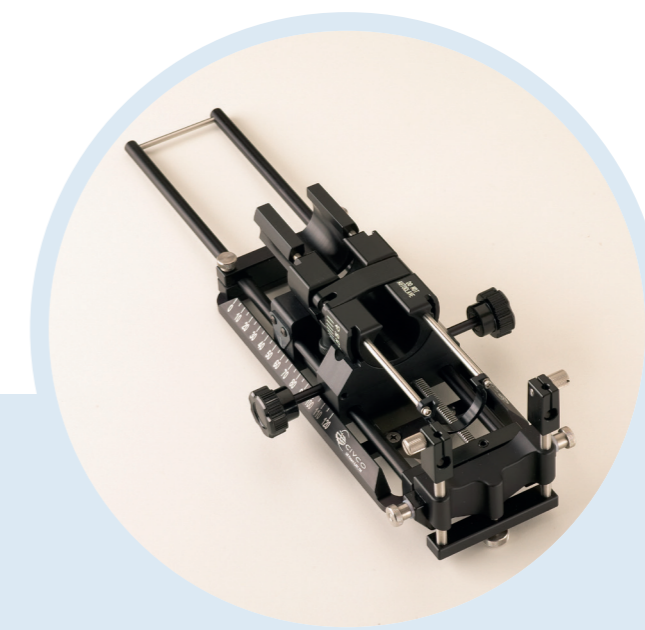
Classic Stepper

The Classic Stepper is a lightweight precision stepping device adaptable to a variety of Brachytherapy / Cryotherapy endocavity biplane transducers.

The Classic Stepper features a secure centerline detent with 60-degree angular rotation both counter and clockwise. Also, easy-to-read marking scales are aligned to illustrate base to apex movements of the probe.

Features:

- Accurate transducer control and placement verification using linear advancement feature
- Transducer rotates easily out of stepper for easy CIVCO endocavity balloon installation and device cleaning
- Grid independently moves to allow a "flush" placement against the perineum improving needle placement within the gland





Micro-Touch™ Stabilizers

Micro-Touch™

The Micro-Touch™ features stable single-arm fixation with a single-point locking mechanism to instantly fix the stabilizer in the desired position.

An adjustable weight-assist feature allows users to achieve a “zero-gravity” feel when positioning the ultrasound probe both in vivo and in vitro.



Micro-Touch™ LP

The Micro-Touch™ LP is specifically designed for use on cystoscopy tables with a fixed fluoroscopy gantry or fixed table.

The Micro-Touch™ LP attaches to tables opposite the gantry and allows users to perform simultaneous or intermittent fluoroscopy and seed implantation while retaining the remarkable versatility of the Micro-Touch™ ultrasound platform and needle guidance system.



Micro-Touch™ Transportation Stand

The Micro-Touch™ transportation stand provides a secure and stable method to transport the Micro-Touch™ stabilizer and corresponding stepper, and to store it when not in use.



AccuCARE™ Accessories



AccuCARE™ accessory kits are a cost-effective solution, providing all accessories needed to perform ultrasound-guided brachytherapy or other transperineal procedures. Each kit contains 10 complete procedures comprised of a template grid, system drape, endocavity balloon and a gel packet

Template Grid

Sterile, single-use template grids consist of rows and columns of holes spaced 5mm apart, providing accurate placement of radioactive seeds in predefined areas of the prostate.

The single-use grid is sterile and is a cost-effective solution for an infection-controlled environment.

Endocavity Balloon

Single-use, low-profile design of the endocavity balloon features an adjustable inflation control mechanism to control the offset between transducer and prostate for enhanced ultrasound imaging

Endocavity Drape

Single-use drape provides a protective barrier for AccuCARE equipment during transperineal procedures. The clear material allows for easy identification and manipulation of AccuCARE instruments.



Multi-Purpose Workstations™

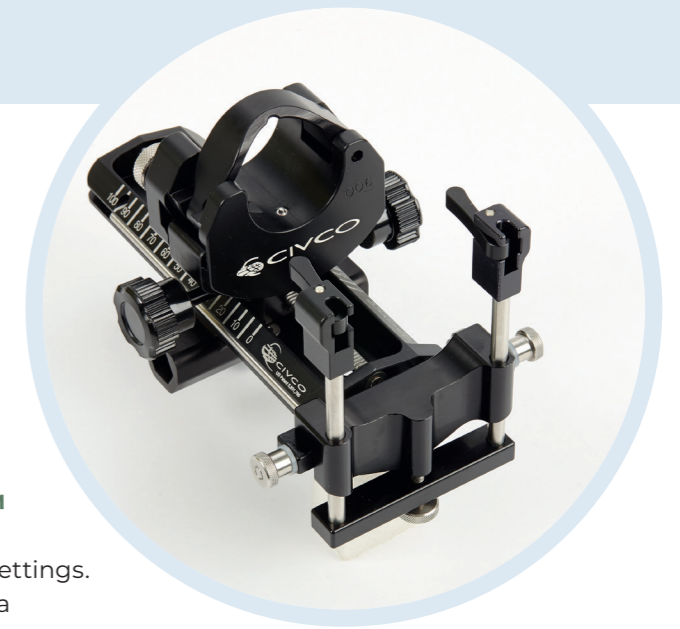
Multi-Purpose Workstation™

The Multi-Purpose Workstation™ and Stepper is ideally suited for transperineal and transrectal procedures where a stable platform is required. Available in floorstand or table mount configurations, the workstation features a single-point locking mechanism for rapid transition and a multi-directional base.

Designed for Cryotherapy, Fiducial Marker Placement, Saturation Biopsy, Targeted Biopsy and Volume Studies.

Features:

- FREEHAND MANIPULATION - Allows practitioners to manipulate the transducer and lock instantly in any desirable position
- INDEPENDENT MICRO-ADJUSTMENT - Adjustments can be made in every plane and axis to attain an ideal orientation and starting position
- VERSATILITY & FLEXIBILITY - Will adapt to any transperineal procedure requiring ultrasound guidance



Multi-Purpose Workstation LP™

Designed for inpatient, outpatient and clinical settings. Ideal for the user who demands the features of a Multi-Purpose Workstation, but requires a rail mount.

Multi-Purpose Workstation Stepper™

Lightweight, advanced stepping device adaptable to a variety of transrectal transducers. The quick-release feature allows the disposable grid to easily attach to stepper during template guided procedures.

Features:

- Secure centerline detent with 40-degree clockwise and counterclockwise rotation
- Accurate linear advancement of the probe in 5mm increments
- Grid independently moves from a back-side location to allow easy placement against the superficial fascia



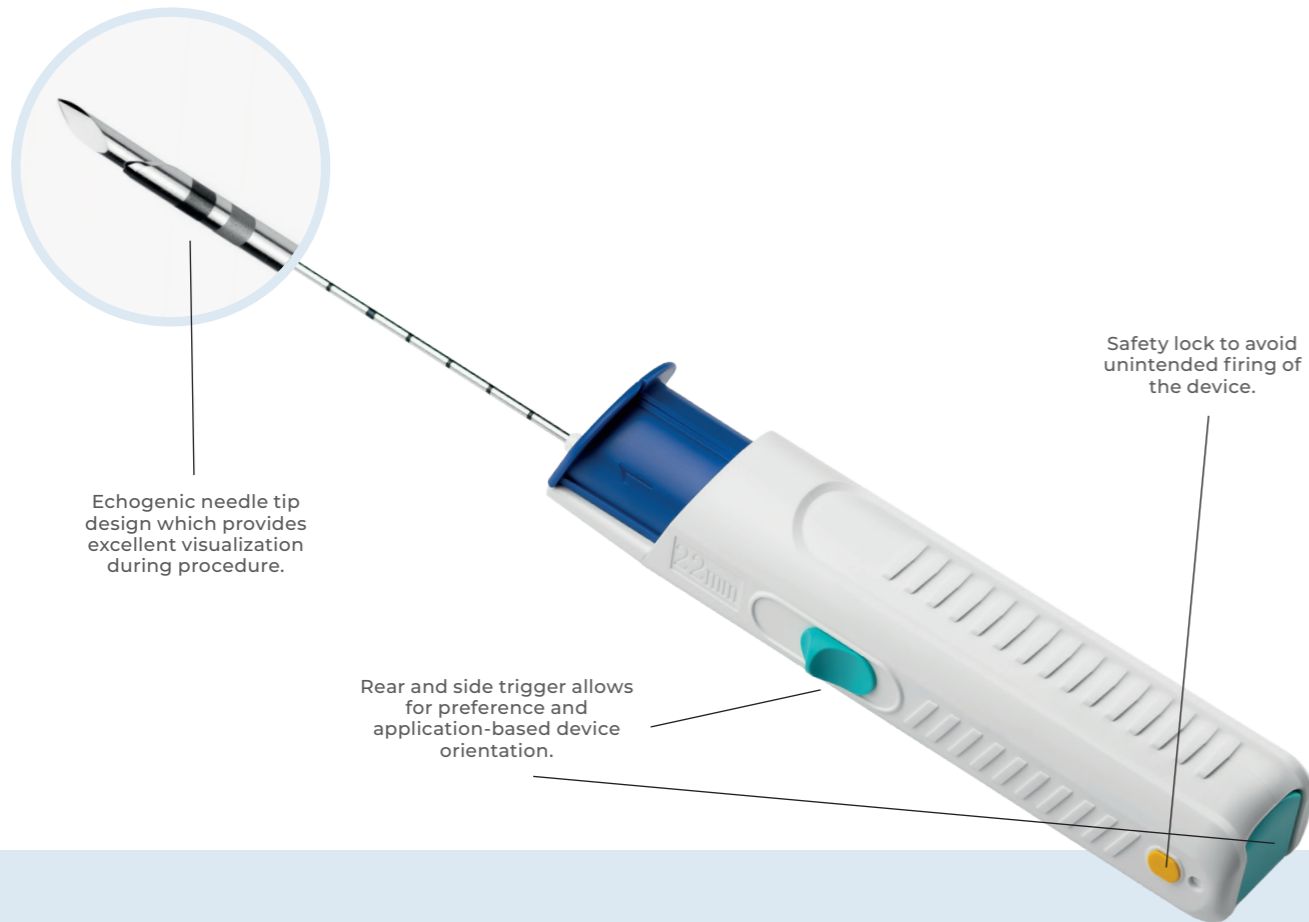
Automatic Biopsy Needles

M-Biopsy® Automatic Biopsy Needles

The M-Biopsy® fully automatic disposable biopsy instrument is a user-friendly biopsy device designed to provide a high-quality biopsy sample.

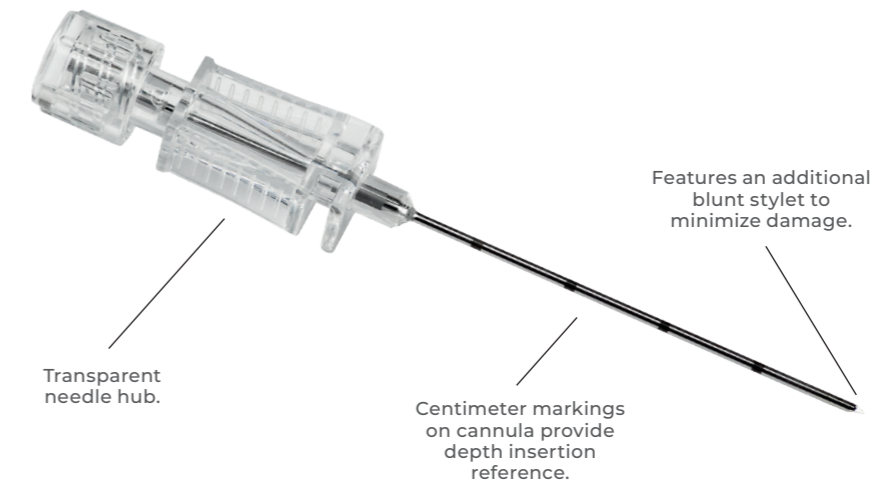
It has been designed with focus on ergonomics to secure a comfortable grip, independent of device orientation. The left and right loading sliders secures a high-quality sample without compromising device fire power.

The M-Biopsy® coaxial needle comes with a sharp trocar tip and a transparent needle hub. The needle features an additional blunt stylet to minimize damage to tissue, vasculature, and organs.



Features:

- Ergonomic and lightweight one-handed design to secure comfortable grip, increase control, and minimize needle movement during imaging.
- 2-stage left and right loading button provides reduction of force needed to cock device.
- Comes with 11mm or 22mm throw length to meet a variety of clinical needs.
- Available as a single device or as a set with a coaxial needle for improved procurement and inventory control.





Endocavity Needle Guides

Endocavity Needle Guides

CIVCO's endocavity needle guidance systems are manufactured for a variety of transducers and designed to correspond with on-screen software guidelines.

CIVCO's complete line of endocavity needle guidance solutions include transrectal and transvaginal guides for ultrasound transducers from leading ultrasound system manufacturers.

Features

- Designed to provide a secure fit to a wide range of transducers.
- Recommended for procedures such as tissue biopsies, fluid aspirations, catheterization, and marker placement.
- Reduces the risks associated with cross-contamination.
- Reduces procedure prep and clean-up time.



Smooth transition from the large funnel insertion point to the exit point ensures seamless navigation during puncture procedures.

Endocavity Needle Guides Quick-Release

The optional quick-release mechanism allows users to place a catheter or device by removing the "hatch" without the hassle of removing the probe, thus eliminating the use of guidewires.



The guide attaches by snapping into the designated location on the transducer, ensuring proper one-step positioning throughout the procedure.

Features

- Single use.
- Provides physicians with a tool for performing needle and catheter placement procedures such as deep pelvic and perirectal abscess drainage, core tissue biopsy, and larger gauge device placement.



Endocavity Ultrasound Probe Covers

CIV-Flex™ Latex-Free Endocavity Covers

The durable CIV-Flex™ material allows ultrasound waves to travel freely, offering distortion-free imaging. CIV-Flex™ easily slides over transducers and is a recommended alternative for latex-sensitive patients and professionals.

Features

- Sterile cover kits include gel packet and colored elastic bands.
- Not made with natural rubber latex.
- Especially popular for OB/GYN scanning procedures.



Soft pliable material,
comfortable for patients.

NeoGuard® Latex-Free Endocavity Covers

NeoGuard® is a rolled cover made with material specially designed for ultrasound use. These high-quality covers are available for popular endocavity transducers and are recommended for patients and professionals with latex protein sensitivities.

Features

- Covers include colored elastic bands.
- Sterile gel packets available separately.
- Not made with natural rubber latex.



Ordering and Specifications

Barrigel® Rectal Spacing

Ref. no.	Product Description	Box
011507	Barrigel® Prostate Spacer - 3 syringes + 2 needles	

AccuCare™

EX3™ Stepper

Ref. no.	Product Description	Box
609-004	EX3™ Stepper - Best Sonalis TRT TriView	1
620-119	EX3™ Stepper - BK Medical 8848, 8558, 8658, E14CL4b	1
642-443	EX3™ Stepper - GE Healthcare ERB	1
642-514	EX3™ Stepper - GE Healthcare E7C8L	1
644-081	EX3™ Stepper - FUJIFILM Healthcare (Hitachi) C41L47RP, EUP-U533	1
614-119	EX3™ Stepper - FUJIFILM Healthcare (Hitachi) UST-672-5/7.5	1
658-007	EX3™ Stepper - Mindray ELC13-4 (U/E/s)	1
676-177	EX3™ Stepper - Siemens Endo-PII	1
683-003	EX3™ Stepper - Terason 8B4S	1

Classic Stepper

Ref. no.	Product Description	Box
620-089	Classic Stepper - BK Medical 8558, 8658, 8848, E14CL4b	1
609-001	Classic Stepper - Best Sonalis TRT TriView	1
639-055	Classic Stepper - Esaote TRT33	1
642-316	Classic Stepper - GE Healthcare ERB	1
642-512	Classic Stepper - GE Healthcare E7C8L	1
614-092	Classic Stepper - FUJIFILM Healthcare (Hitachi) UST-672-5/7.5	1
644-064	Classic Stepper - FUJIFILM Healthcare (Hitachi) C41L47RP, EUP-U533	1
676-114	Classic Stepper - Siemens Endo-PII	1

Micro-Touch™ Stabilizers

Ref. no.	Product Description	Box
610-911	Micro-Touch™ adjustable dual-sided table mount	1
610-912	Micro-Touch™ single-sided table mount (right side)	1
610-913	Micro-Touch™ single-sided table mount (left side)	1
610-911S	Micro-Touch™ transportation stand (dual-sided table mount)	1
610-912S	Micro-Touch™ LP transportation stand (right side)	1
610-913S	Micro-Touch™ LP transportation stand (left side)	1

Accessory Kits

Ref. no.	Product Description	Box
610-2469	Sterile 18GA template grid, sterile 81.3 X 91.4cm polyethylene drape, non-sterile 2 x 14cm endocavity balloon	20
610-2470	Sterile 17GA template grid, sterile 81.3 X 91.4cm polyethylene drape, non-sterile 2 x 14cm endocavity balloon	20

Template Grids

Ref. no.	Product Description	Box
610-905	Sterile 17GA Grid	5
610-906	Sterile 18GA Grid	5
610-977	Sterile 14GA Grid	5

AccuCare™

Endocavity Balloon

Ref. no.	Product Description	Box
610-898	Non-sterile 2 x 14cm endocavity balloon	10

System Drape

Ref. no.	Product Description	Box
610-870	Sterile flat 81.3 x 91.4cm polyethylene system drape	20

Multi-Purpose Workstation™

Ref. no.	Product Description	Box
610-974	Multi-Purpose Workstation™ with adjustable floor stand	1
610-975	Multi-Purpose Workstation LP™ with rail mount	1
610-1393	Multi-Purpose Workstation Stepper™ - Mindray 6LB7	1
610-1397	Multi-Purpose Workstation Stepper™ - SonoScape BCL10-5	1
620-094	Multi-Purpose Workstation Stepper™ - BK Medical 8558, 8658	1
620-113	Multi-Purpose Workstation Stepper™ - BK Medical 8808e, 8818	1
620-117	Multi-Purpose Workstation Stepper™ - BK Medical 8848, E14CL4b	1
642-334	Multi-Purpose Workstation Stepper™ - GE Healthcare ERB	1
642-510	Multi-Purpose Workstation Stepper™ - GE Healthcare E7C8L	1
644-066	Multi-Purpose Workstation Stepper™ - FUJIFILM Healthcare (Hitachi) C41L47RP, EUP-U533	1
614-098	Multi-Purpose Workstation Stepper™ - FUJIFILM Healthcare (Hitachi) UST-672-5/7.5	1
676-121	Multi-Purpose Workstation Stepper™ - Siemens Endo-PII	1
683-006	Multi-Purpose Workstation Stepper™ - Terason 8BP4, 8B4S	1

M-Biopsy® Automatic Disposable Biopsy Needle

Ref. no.	Product Description	Box
N70118200-CE	Disposable Automatic Biopsy System 18G x 20CM - Throw Length = 22mm	5
N70118250-CE	Disposable Automatic Biopsy System 18G x 25CM - Throw Length = 22mm	5

Latex-free Endocavity Ultrasound Probe Covers

CIV-Flex™ Endocavity Probe Covers

610-006	Sterile 11.9 tapered to 3.8 x 61cm CIV-Flex™ cover, gel	24
610-007	Non-sterile 11.9 tapered to 3.8 x 61cm CIV-Flex™ cover	24
670-038	Sterile 10.2 tapered to 2.5 x 30cm CIV-Flex™ cover, gel	24

NeoGuard® Endocavity Probe Covers

Ref. no.	Specification	Qty/box
610-1038	Sterile 2.6 x 30cm NeoGuard® cover	50
610-1039	Non-sterile 2.6 x 30cm NeoGuard® cover	50
610-1126	Sterile 2 x 30cm NeoGuard® cover	24
610-1127	Non-sterile 2 x 30cm NeoGuard® cover	24
610-1348	Non-sterile 2.6 x 30cm NeoGuard® cover	100
610-1349	Non-sterile 2.6 x 30cm NeoGuard® cover	250
610-836	Non-sterile 2.6 x 30cm NeoGuard® cover	24
610-838	Non-sterile 4 x 30cm NeoGuard® cover	24
610-843	Sterile 2.6 x 30cm NeoGuard® cover	24
610-844	Sterile 4 x 30cm NeoGuard® cover	24



mermaid medical®

NORDICS

Frydensbergvej 25 - DK-3660 Stenløse

customer@mermaidmedical.com

Phone: +45 47 10 85 70

Fax: +45 47 10 85 71

MM 01-1000-08 ENG Rev. 03.